



XF STB-4

Configuring TIFF output for different folders

Configuring TIFF output for different folders

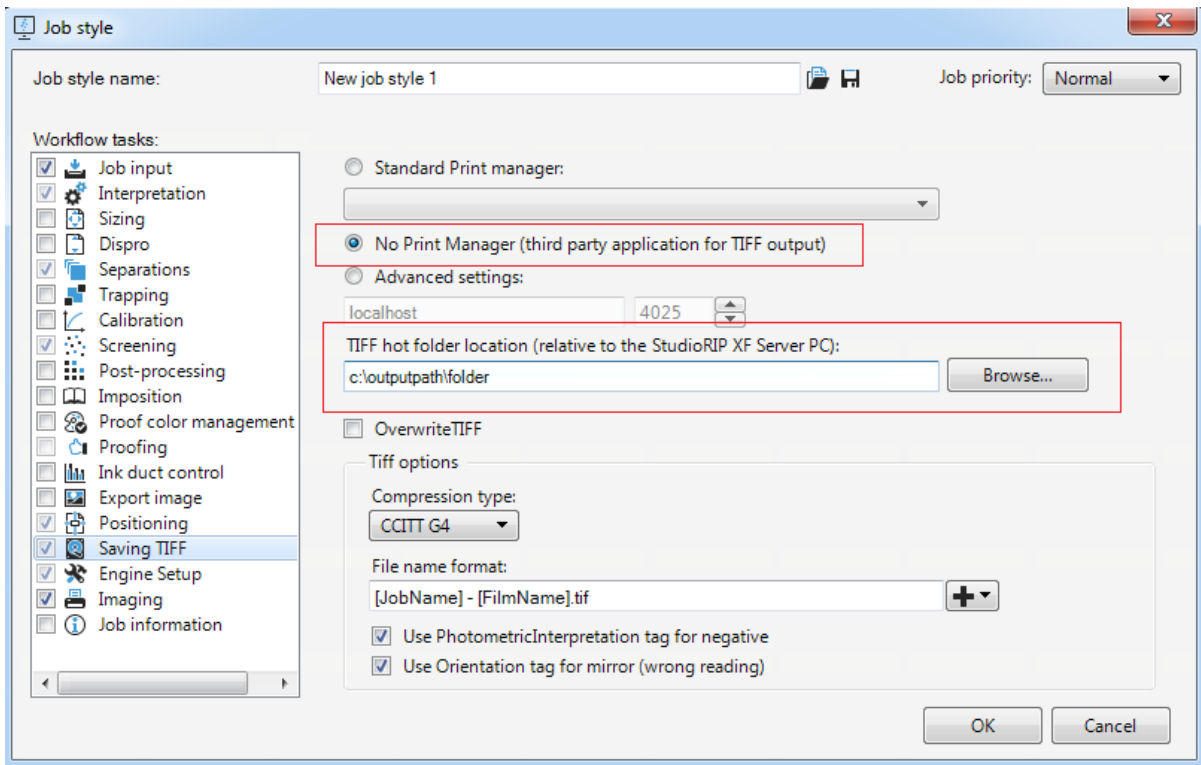
The most common output method for StudioRIP installations is TIFF out. And often there are different folders that TIFF files need to go into.

There are actually 2 different methods of exporting TIFF.

Type	Description
Direct Output	<p>This exports the Tiff directly out of the Job Browser to an external folder. It does not need a Print Manager. This is the quickest to configure.</p> <p>Because it does not use a Print Manager, there is no ability to use a Print Manager History for reprints and can only output simple TIFF files without the advanced settings that the TIFF Print Manager offers.</p> <p>This system is useful if reprints will be carried out from the TIFF catcher system as it avoids extra steps and storing used files</p>
TIFF Print Manager	<p>With this mode jobs goes from Job browser to a print manager before output. It gives options of a history that allows for exact plate remakes, and also gives advantages of further configuration for TIFF formats and other options such as output to multiple locations for each job.</p> <p>The history size is limited to disk space and is useful feature when outputting to TIFF catchers than do not keep a history or keep on a low number of plates for the history</p>

Direct output

To configure different jobstyles for different output locations, first make your jobstyles with correct configurations and then In the Saving Tiff section of the jobstyle select No print Manager and then in Tiff hotfolder location select the output path.

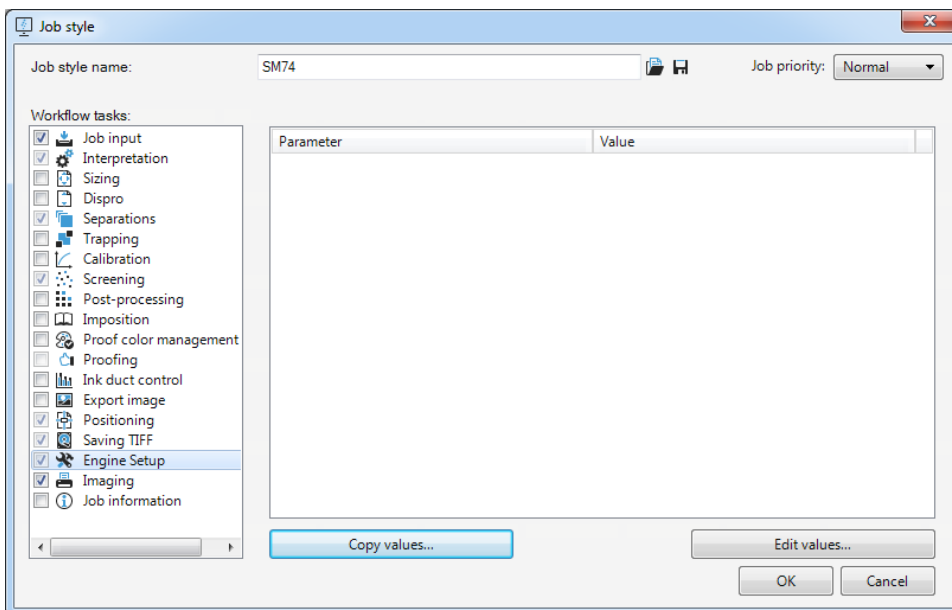


TIFF Print Manager

It is assumed that the Print Manager has been already created and when creating the output path was set to the root folder of the tiff catcher.

A common question people ask is how to send to different hotfolders, sometimes people make multiple Print Managers, but this should not be done and is a messy solution.

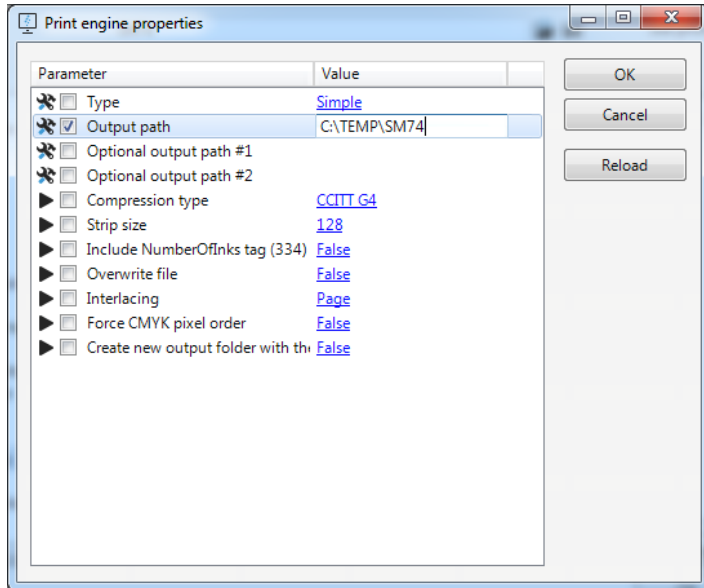
Instead keep to one Print Manager per device and edit the jobstyle.



In the engine setup section click on copy values (The Print Manager must be running at this stage)

This will bring up a window that will allow you to copy specific settings of the TIFF plugin for the jobstyle.

Select output path and change the path for your needed output path and click OK



Once finished click on OK and the settings will be used and can be edited if required later on

